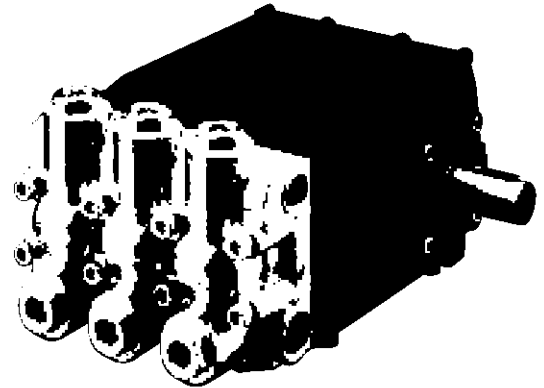


### FEATURES

- The industry's choice for high-flow applications
- Forged brass manifold with an exclusive lifetime warranty
- Large-capacity, die-cast, anodized aluminum oil-bath crankcase
- Over-sized connecting rods for maximum life
- Heavy-duty tapered roller bearing.
- Solid ceramic plungers with continuously lubricated packings
- Unitized stainless steel inlet and discharge valves

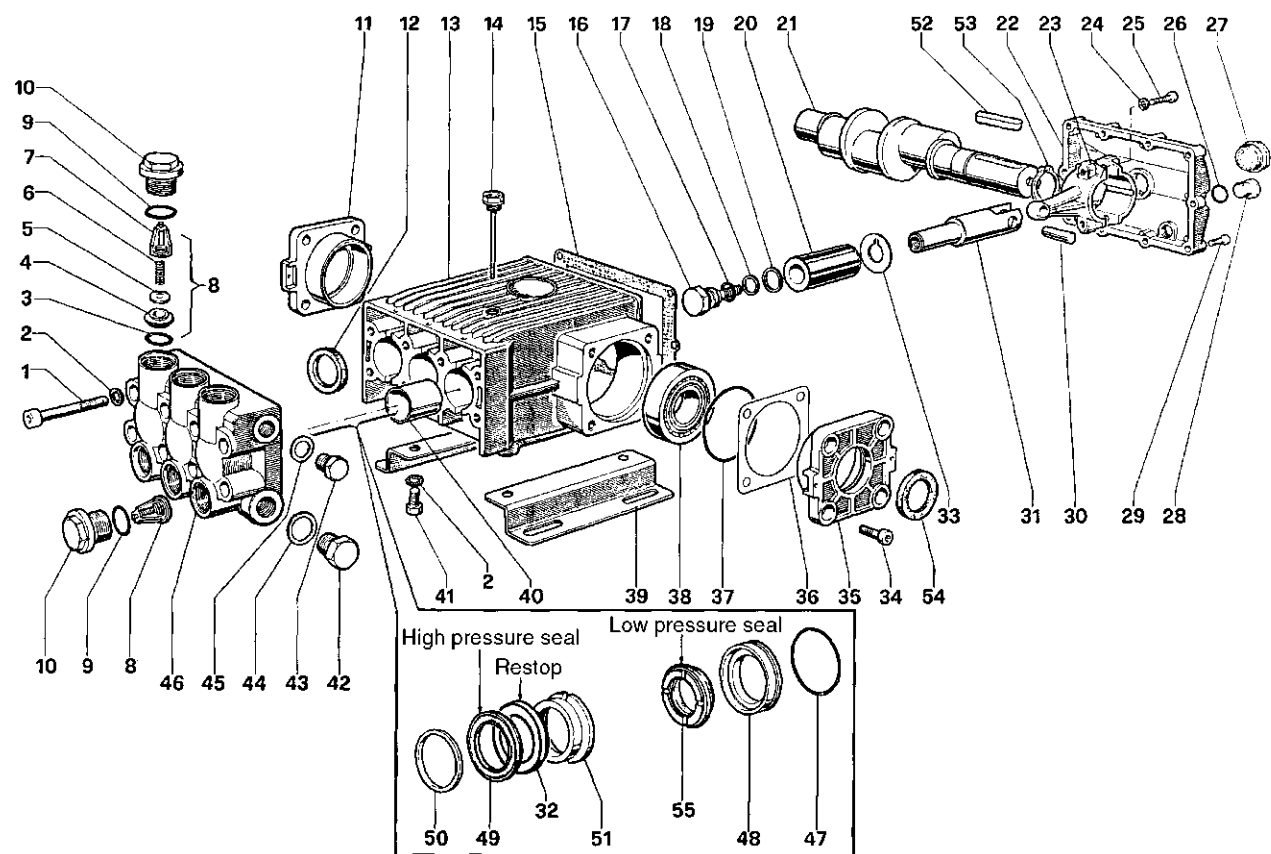


### SPECIFICATIONS

Pump Model	T61	T81
Maximum Volume	17.0 GPM	21.0 GPM
Maximum Discharge Pressure	1000 PSI	
Maximum Pump Speed	650 RPM	
Maximum Inlet Pressure	125 PSI	
Maximum Inlet Vacuum	9 ft. water (7.9 in. Hg)	
Bore	1.772 in. / 45 mm	
Stroke (in./mm)	.945 / 24	1.102 / 28
Crankcase Oil Capacity	91 oz.	
Maximum Fluid Temperature	165°F	
Inlet Port Thread	1-11 BSPP-F	
Discharge Port Thread	3/4-14 BSPP-F	
Shaft Diameter.	1.378 in. / 35 mm	
Weight	92 lbs.	
Dimensions	15.6 x 14.0 x 9.5 in.	

# T Series 76 – 45 mm bore

**GENERAL PUMP** *A member of the Interpump Group*



## PARTS LIST

ITEM	PART NO.	DESCRIPTION	KIT NO.	QTY.	ITEM	PART NO.	DESCRIPTION	KIT NO.	QTY.	ITEM	PART NO.	DESCRIPTION	KIT NO.	QTY.
1	99.4418.00	Screw	8		19	96.7555.00	Washer	74	3	37	90.4141.00	O-Ring		2
2	96.7195.00	Washer	12		20	76.0402.09	Plunger		3	38	91.8474.00	Bearing		2
3	90.4059.00	O-Ring	43	6	21	76.0211.35	Crankshaft (T61)		1	39	76.2000.74	Pump Feet		2
4	36.2011.66	Valve Seat	43	6		76.0210.35	Crankshaft (T81)			40	90.9174.00	Bushing		3
5	36.2010.76	Valve Plate	43	6	22	76.1600.22	Cover		1	41	99.4266.00	Screw		4
6	94.7450.00	Spring	43	6	23	76.0303.01	Connecting Rod		3	42	98.2325.00	Cap		1
7	36.2009.51	Valve Guide	43	6	24	96.7104.00	Washer		6	43	98.2265.00	Cap		1
8	36.7065.01	Valve Assembly	43	6	25	99.3720.00	Screw		6	44	96.7870.00	Washer		1
9	90.4065.00	O-Ring		6	26	90.3833.00	O-Ring		2	45	96.7700.00	Washer		1
10	98.2420.00	Cap		6	27	97.5968.00	Oil Indicator		1	46	76.1200.41	Manifold		1
11	76.1501.22	Cover		1	28	98.2100.00	Cap		2	47	90.3903.00	O-Ring	47, 80	3
12	90.1670.00	Oil Seal	44	3	29	99.1897.00	Screw		10	48	76.0802.70	Packing Retainer	47, 80	3
13	76.0100.22	Crankcase		1	30	97.7400.00	Wrist Pin		3	49	90.2850.00	Packing	79, 80	3
14	98.2270.00	Dip Stick		1	31	77.0500.54	Plunger Guide		3	50	76.1002.93	Head Ring	48, 80	3
15	76.2119.84	Cover Gasket		1	32	90.2848.00	Restop Ring	79,80,81	3	51	76.2170.70	Intermed. Ring	80, 81	3
16	69.2195.66	Plunger Screw	74	3	33	96.7568.00	Washer		3	52	91.4978.00	Key		1
17	90.3841.00	O-Ring	74	3	34	99.3652.00	Screw		8	53	90.0695.00	Snap Ring		1
18	90.5107.00	Anti-Ext. Ring	74	3	35	76.1500.22	Cover		1	54	90.1672.00	Oil Seal	32	1
					36	76.2200.78	Shim		2	55	90.2855.00	Seal, Low Press., 45mm	79,80	3

## REPAIR KITS

KIT NO.	32	43	44	47	48	74	79	80	81
ITEM NO.s INCLUDED IN KIT	54	3, 4, 5, 6, 7 (8)	12	47, 48	50	16, 17, 18, 19	32, 49, 55	32, 47, 48, 49, 50, 51, 55	32, 51
NUMBER OF ASSEMBLIES IN KIT	2	6	3	3	6	3	3	1	3
NUMBER OF CYLINDERS KIT WILL SERVICE	-	3	3	3	3	3	3	1	3

## TORQUE SPECS\*

Position	Ft.-lbs.
1	51.5
10	95.8
16	29.4
25	29.4
27	13.2
28	29.4
29	7.3
34	29.4
41	51.5
42	73.7
43	51.5